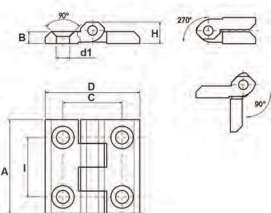


CCN

CCM

Cerniera Metallica con foro Passante
Metal Hinge with Through Hole



COD.	A	D	I	C	d1	B	H	Colore Colour	
A3CCN40	40	40	25	25	5,5	5	9	Nera - Black	20
A3CCN50	50	50	30	30	6,5	6	11,5	Nera - Black	20
A3CCN60	60	60	36	36	6,5	6	11,5	Nera - Black	20
A3CCN64	64	64	40	40	6,5	6	11,5	Nera - Black	20
A3CCM40	40	40	25	25	5,5	5	9	Cromata - Chrome	20
A3CCM50	50	50	30	30	6,5	6	11,5	Cromata - Chrome	20
A3CCM60	60	60	36	36	6,5	6	11,5	Cromata - Chrome	20

Caratteristiche

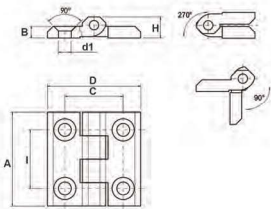
MATERIALE:
Zinco pressofuso

Product specification

MATERIAL:
Die-cast zinc

CCX

Cerniera in Acciaio Inox AISI 316 con Foro Passante
AISI 316 Stainless Steel Hinge with Through Hole



COD.	A	D	I	C	d1	B	H	
A3CCX40	40	40	25	25	5,5	5	9	20
A3CCX50	50	50	30	30	6,5	6	11,5	20
A3CCX60	60	60	36	36	8,5	8	14,5	20

Caratteristiche

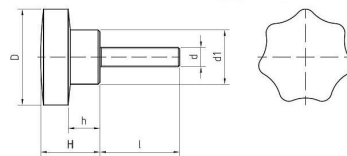
MATERIALE:
Acciaio inox AISI 316

Product specification

MATERIAL:
AISI 316 stainless steel

V7M

Volantino 7 Punte con Perno in Ferro, Filettato
Star Knob, 7 Points, Threaded Stud



COD.	D	d	l	H	h	d1	Peso Weight - gr	
B1V7M300415	30	04MA	15	23	10	17	16	20
B1V7M300430	30	04MA	30	23	10	17	17	20
B1V7M300512	30	05MA	12	23	10	17	16	20
B1V7M300520	30	05MA	20	23	10	17	17	20
B1V7M300530	30	05MA	30	23	10	17	19	20
B1V7M300612	30	06MA	12	23	10	17	16	20
B1V7M300615	30	06MA	15	23	10	17	18	20
B1V7M300620	30	06MA	20	23	10	17	21	20
B1V7M300625	30	06MA	25	23	10	17	20	20
B1V7M300630	30	06MA	30	23	10	17	21	20
B1V7M300640	30	06MA	40	23	10	17	23	20
B1V7M300650	30	06MA	50	23	10	17	25	20
B1V7M300815	30	08MA	15	23	10	17	22	20
B1V7M300820	30	08MA	20	23	10	17	23	20
B1V7M300825	30	08MA	25	23	10	17	25	20
B1V7M300830	30	08MA	30	23	10	17	26	20
B1V7M300840	30	08MA	40	23	10	17	29	20
B1V7M300850	30	08MA	50	23	10	17	32	20
B1V7M300860	30	08MA	60	23	10	17	40	20
B1V7M400620	40	06MA	20	27	11	21	33	20
B1V7M400630	40	06MA	30	27	11	21	35	20
B1V7M400640	40	06MA	40	27	11	21	37	20
B1V7M400650	40	06MA	50	27	11	21	39	20
B1V7M400815	40	08MA	15	27	11	21	37	20
B1V7M400820	40	08MA	20	27	11	21	38	20
B1V7M400830	40	08MA	30	27	11	21	41	20
B1V7M400840	40	08MA	40	27	11	21	44	20
B1V7M400850	40	08MA	50	27	11	21	48	20
B1V7M400860	40	08MA	60	27	11	21	52	20
B1V7M401020	40	10MA	20	27	11	21	45	20
B1V7M401030	40	10MA	30	27	11	21	51	20
B1V7M401040	40	10MA	40	27	11	21	55	20
B1V7M401050	40	10MA	50	27	11	21	60	20
B1V7M401060	40	10MA	60	27	11	21	65	20
B1V7M500815	50	08MA	15	35	15	25	63	20
B1V7M500820	50	08MA	20	35	15	25	65	20
B1V7M500830	50	08MA	30	35	15	25	68	20
B1V7M500840	50	08MA	40	35	15	25	71	20
B1V7M500850	50	08MA	50	35	15	25	74	20
B1V7M500860	50	08MA	60	35	15	25	77	20
B1V7M501020	50	10MA	20	35	15	25	72	20
B1V7M501030	50	10MA	30	35	15	25	76	20
B1V7M501040	50	10MA	40	35	15	25	82	20
B1V7M501050	50	10MA	50	35	15	25	86	20
B1V7M501060	50	10MA	60	35	15	25	90	20
B1V7M501230	50	12MA	30	35	15	25	90	20
B1V7M501240	50	12MA	40	35	15	25	94	20
B1V7M501250	50	12MA	50	35	15	25	97	20
B1V7M600830	60	08MA	30	39	18	28	94	20
B1V7M600840	60	08MA	40	39	18	28	96	20
B1V7M600850	60	08MA	50	39	18	28	95	20
B1V7M600860	60	08MA	60	39	18	28	104	20
B1V7M601020	60	10MA	20	39	18	28	90	20
B1V7M601030	60	10MA	30	39	18	28	96	20
B1V7M601040	60	10MA	40	39	18	28	99	20
B1V7M601050	60	10MA	50	39	18	28	103	20
B1V7M601060	60	10MA	60	39	18	28	107	20
B1V7M601430	80	14MA	30	53	28	32	240	20
B1V7M601650	80	16MA	50	53	28	32	274	20

Caratteristiche

MATERIALE CORPO:

Fenoplasto rinforzato di colore nero, resistente a solventi, oli, grassi ed altri agenti chimici (PF)

PARTE METALLICA E/O FISSAGGIO:

Perno in AVP

Product specification

MAIN PART MATERIAL:

Black phenoplast, solvents, oils, greases and other chemical agents proof (PF)

METALLIC PART:

Zinc plated steel threaded bolt, rounded edges

COD.	D	d	l	H	h	d1	Peso Weight - gr	
B1V7M601040	60	10MA	40	39	18	28	100	20
B1V7M601050	60	10MA	50	39	18	28	113	20
B1V7M601060	60	10MA	60	39	18	28	120	20
B1V7M601230	60	12MA	30	39	18	28	120	20
B1V7M601240	60	12MA	40	39	18	28	123	20
B1V7M601250	60	12MA	50	39	18	28	125	20
B1V7M601430	60	14MA	30	39	18	30	128	20
B1V7M701030	70	10MA	30	42	18	30	137	20
B1V7M701050	70	10MA	50	42	18	30	151	20
B1V7M701230	70	12MA	30	42	18	30	156	20
B1V7M701240	70	12MA	40	42	18	30	158	20
B1V7M701250	70	12MA	50	42	18	30	162	20
B1V7M701430	70	14MA	30	42	18	30	166	20
B1V7M701440	70	14MA	40	42	18	30	196	20
B1V7M701450	70	14MA	50	42	18	30	191	20
B1V7M801650	80	16MA	50	42	18	32	220	20
B1V7M801030	80	10MA	30	53	28	32	200	20
B1V7M801250	80	12MA	50	53	28	32	222	20
B1V7M801430	80	14MA	30	53	28	32	240	20
B1V7M801650	80	16MA	50	53	28	32	274	20

