

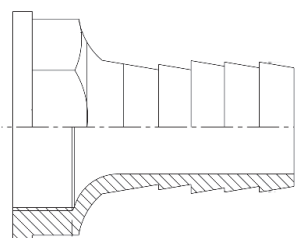


TÖMLŐVÉGEK HOSE SHANKS

Technikai információk Technical information



RIV
Rubinetterie Italiana Velatta SpA
since 1950



Alapanyag
Material

Réz
Brass

Rozsdamentes acél
Stainless steel

Műanyag
Plastic

Külső és belső menetes tömlővégek elérhetők kúpos vagy G-menettel, sima vagy bordázott kivitelben, biztonsági peremmel vagy anélkül. Tömlők szereléséhez, toldásához, beépítéséhez egyszerű és gyors megoldást kínálnak.

Hose shanks with female or with male thread are available with conical or with G-thread, in smooth or serrated versions, with or without safety flange. They are used for assembling hoses together, for joining them; they provide easy and quick solution.

TÖMLŐVÉG – BELSŐ MENETES HOSE SHANK – FEMALE THREAD



RIV
Rubinetterie Italiana Velatta SpA
since 1950



Cikkszám / Code					Névleges átmérő Nominal diameter	Menet Thread	
Kúpos menet Conical thread	G-menet G-thread						
	Bordázott tömlővég Serrated hose shank		Sima tömlővég Smooth hose shank				
	Réz Brass	Réz Brass	SS	Réz Brass	SS	(mm)	(")
64.073.001	-	-	-	-	-	10	3/8
64.073.002	-	-	-	-	-	10	1/2
64.073.003	64.104.001	64.102.001	62.000.767	62.000.776		13	1/2
64.073.004	-	-	-	-		16	1/2
64.073.008	-	-	-	-		18	1/2
64.073.005	64.104.002	64.102.002	62.000.768	62.000.777		19	3/4
64.073.006	64.104.003	64.102.003	62.000.769	62.000.778		25	1
64.073.007	64.104.004	64.102.004	62.000.770	62.000.779		32	1.1/4
-	64.104.005	64.102.005	62.000.771	62.000.780		38	1.1/2
62.000.766	64.104.006	64.102.006	62.000.772	62.000.781		50	2
-	64.104.007	64.102.007	62.000.773	62.000.782		63	2.1/2
-	64.104.008	64.102.008	62.000.774	62.000.783		75	3
-	64.104.009	64.102.009	62.000.775	62.000.784		100	4



TÖMLŐVÉG – KÜLSŐ MENETES HOSE SHANK – MALE THREAD



Cikkszám / Code					Névleges átmérő Nominal diameter	Menet Thread
Kúpos menet Conical thread	G-menet G-thread					
Bordázott tömlővég Serrated hose shank			Sima tömlővég Smooth hose shank		(mm)	(")
Réz Brass	Réz Brass	SS	Réz Brass	SS		
64.074.003	-	-	-	-	6	1/4
64.074.004	-	-	-	-	8	1/4
64.074.001	-	-	-	-	10	1/4
64.074.002	-	-	-	-	13	1/4
64.074.005	-	-	-	-	10	3/8
64.074.006	-	-	-	-	13	3/8
64.074.007	-	-	-	-	10	1/2
64.074.008	64.103.001	64.101.001	62.000.787	62.000.796	13	1/2
64.074.009	-	-	-	-	16	1/2
64.074.010	-	-	-	-	20	1/2
64.074.011	-	-	-	-	13	3/4
64.074.012	-	-	-	-	16	3/4
64.074.013	64.103.002	64.101.002	62.000.788	62.000.797	19	3/4
64.074.014	-	-	-	-	22	3/4
64.074.015	-	-	-	-	25	3/4
64.074.016	-	-	-	-	20	1
64.074.017	64.103.003	64.101.003	62.000.789	62.000.798	25	1
64.074.018	-	-	-	-	32	1
64.074.025	-	-	-	-	30	1.1/4
64.074.019	64.103.004	64.101.004	62.000.790	62.000.799	32	1.1/4
64.074.020	64.103.005	64.101.005	62.000.791	62.000.800	38	1.1/2
64.074.024	-	-	-	-	50	1.1/2
64.074.021	64.103.006	64.101.006	62.000.792	62.000.801	50	2
64.074.022	64.103.007	64.101.007	62.000.793	62.000.802	63	2.1/2
62.000.785	64.103.008	64.101.008	62.000.794	62.000.803	75	3
62.000.786	64.103.009	64.101.009	62.000.795	62.000.804	100	4