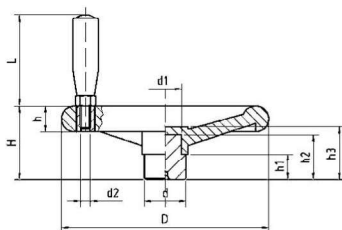


Volantino a 4 Razze con Maniglia girevole Handwheel, 4-Spokes Revolving Grip



VLG series

Caratteristiche

Materiale Corpo:

Phenoplasto rinforzato di colore Nero, resistente a solventi, oli, grassi ed altri agenti chimici

Parte Metallica e/o

Fissaggio:

Mozzo in AVP zincato con pre-foro

Product specification

Main Part Material:

Black Phenoplast, solvents, oils, greases and other chemical agents proof

Metallic Part Material &

Finishing:

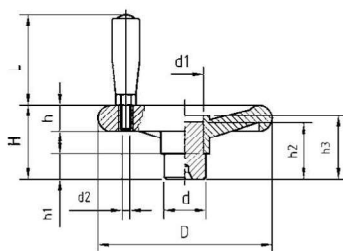
Zinc Plated Steel Hub with Predrilled Hole

Other plastic components:

Revolving Handle, with Brass Bushings

Codice	D	d	d1	d2	H	h	h1	h2	h3	L	Peso grammi Weight gr	Confezione Pz Packing Pcs.
B1VLG100	100	24	21	06MA	47	15	17	36	39	51	222	1
B1VLG120	120	25	21	08MA	49	16	15	35	38	70	274	1
B1VLG140	140	28	23	08MA	54	20	17	38	41	70	391	1
B1VLG160	160	32	27	10MA	56	22	21	40	43	85	558	1
B1VLG200	200	40	32	10MA	72	25	25	47	51	85	903	1
B1VLG250	250	50	42	12MA	82	29	29	56	60	98	1677	1
B1VLG300	300	52	42	12MA	95	35	30	63	68	98	2291	1

Volantino a 4 Razze con Mozzo Affiorante e Maniglia Girevole Handwheel, 4-Spokes Revolving Grip and Visible Hub



VLGA series

Caratteristiche

Materiale Corpo:

Phenoplasto rinforzato di colore Nero, resistente a solventi, oli, grassi ed altri agenti chimici

Parte Metallica e/o

Fissaggio:

Mozzo in AVP zincato con pre-foro per esecuzione foro passante

Product specification

Main Part Material:

Black Phenoplast, solvents, oils, greases and other chemical agents proof

Metallic Part Material &

Finishing:

Zinc plated Steel Visible Hub, with preformed Punching

Other plastic components:

Revolving Handle, with Brass Bushings

Codice	D	d	d1	d2	H	h	h1	h2	h3	L	Peso grammi Weight gr	Confezione Pz Packing Pcs.
B1VLGA100	100	24	21	06MA	47	15	15	36	39	51	240	1
B1VLGA120	120	25	21	08MA	49	16	16	35	38	70	286	1
B1VLGA140	140	28	23	08MA	54	20	20	38	41	70	405	1
B1VLGA160	160	32	27	10MA	56	22	22	40	43	85	581	1
B1VLGA200	200	40	32	10MA	72	25	25	47	51	85	945	1
B1VLGA250	250	50	42	12MA	82	29	29	56	60	98	1731	1
B1VLGA300	300	52	42	12MA	95	35	35	63	68	98	2344	1