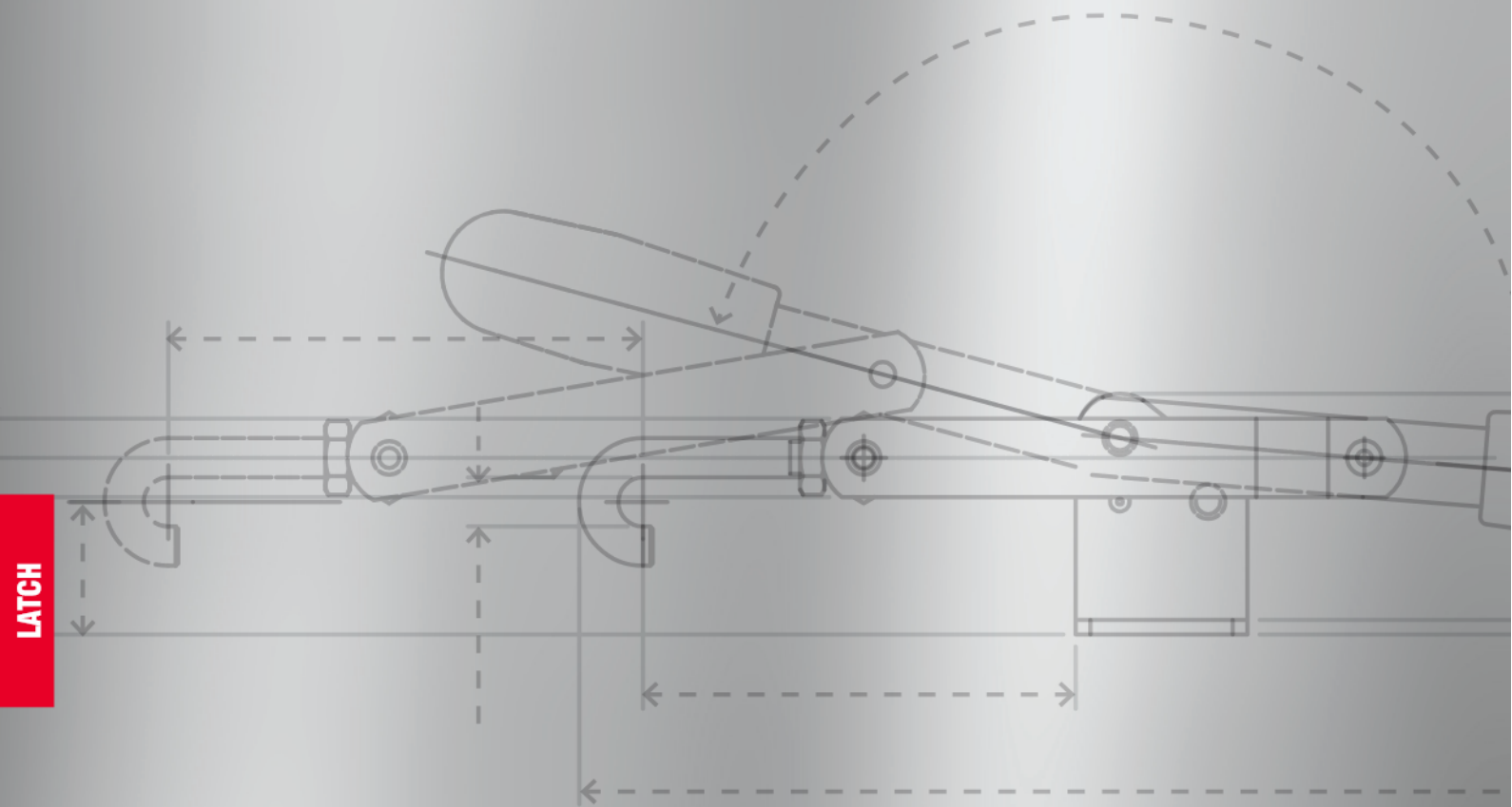


LATCH SERIES



Here you can download
2D and 3D CAD drawings
of all products.



The tie rod clamping tools are characterized by a circular movement of the control lever that transforms into a linear movement of the tie rod. These products are mostly used in closing hinged lids, for container boxes or for machine and equipment doors.

LIGHT SERIES: It has holding forces from 160 to 1000 daN. They are available in galvanized steel and stainless steel.

HEAVY-DUTY SERIES: It has holding forces from 1700 to 4000 daN. They are available in hot-stamped, painted, phosphated or stainless steel.

HIGH TEMPERATURE SERIES:

It has retention forces of 1500 daN.

These tools are free of plastic parts and with the appropriate modifications compared to the light series models (couplings with different tolerances, changes in geometries, different finishes, etc., etc.) that make them suitable for use in environments that can reach 240-300 °C. The products are made of raw steel. They are normally used in the rotational moulding of plastic and require a type of clamping capable of working safely and quickly at high temperatures without uncertainties in closing and opening.

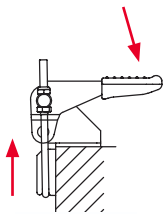
TOGGLE LATCHES: The ET-EG-ETL-EGL models represent a compact version of the lightweight series. They are normally used for closing lids or light doors. Thanks to the possibility of inserting a padlock, they can be used as anti-intrusion security locks.

TIE RODS: they can be single (eyebolt, T-shaped and hook-shaped) or double. All the tie rods are adjustable within the stroke (dimension D).

BASIC TYPES: The support base is parallel to the line of action of the force. In the closed position, the control lever is parallel to the support base. T - TF - TL - TFL - T2- T5 - T6.

The support base is perpendicular to the line of action of the force. In the closed position, the control lever is parallel to the support base. T3.

The support base is perpendicular to the line of action of the force. In the closed position, the control lever is perpendicular to the support base. T4.



T3/T3X - T30/T30X

DOUBLE TIE ROD TOGGLE CLAMPS

Base, control lever, riveted pins, hooking bracket and tie rod:

Galvanized steel (T3-T30) or **AISI 304 stainless steel** (T3X-T30X).

Swinging pivot and nuts:

Galvanized steel (T3-T30) or **AISI 303 stainless steel** (T3X-T30X).

Handle:

Red polyurethane; resistant to oils, greases and other chemical agents.

Executions:

- **T3-T3X:** equipped with double threaded tie rod with nuts, swinging pivot and hooking bracket.
- **T30-T30X:** equipped with swinging pivot and hooking bracket. Double tie rod to be ordered separately (see Accessories).

Features and applications:

These tools are particularly suitable for closing machine covers or doors.

The position of the threaded tie rod can be adjusted within a certain range (see dimension "D") to fit the requirements of use.

The support base is perpendicular to the line of action of the force. In the closed position, the control lever is parallel to the support base.

A special grease is placed between the contacting surfaces during assembly.

Other available executions:

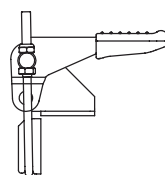
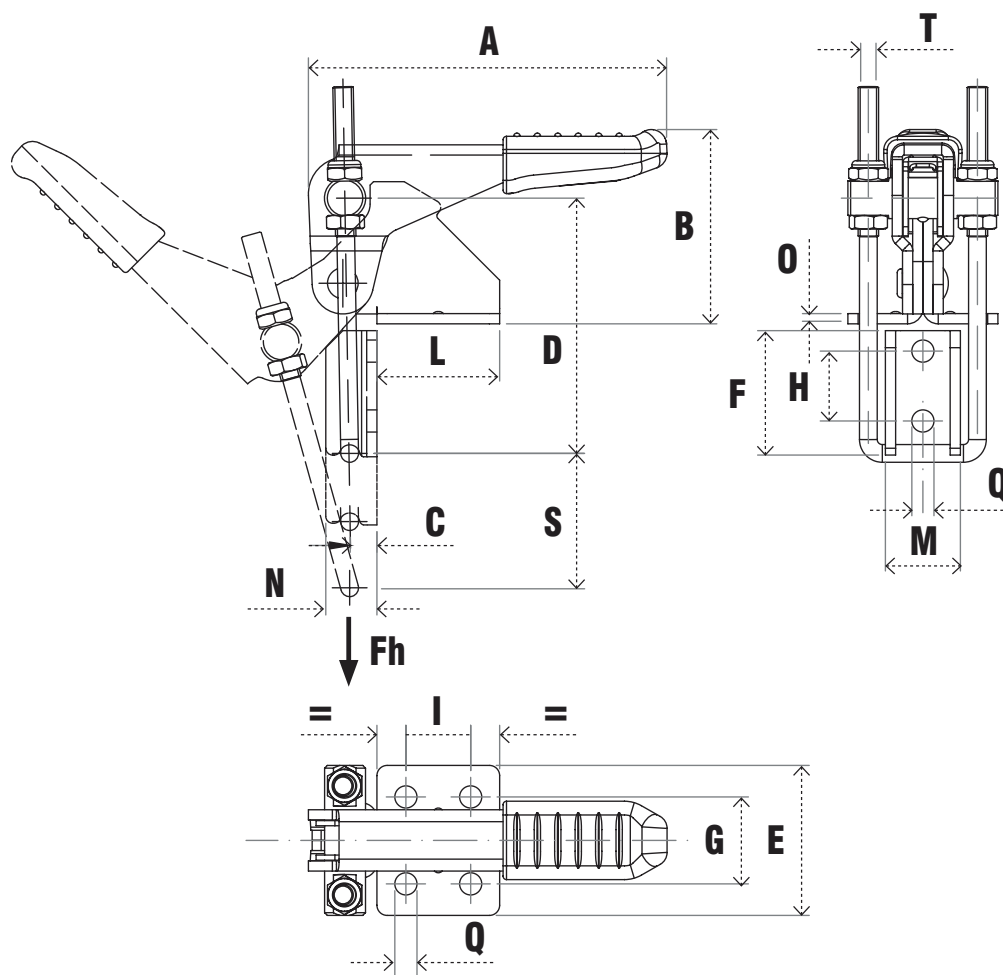
Series with safety lever, heavy series.

Accessories:

- Tie rods of different sizes (see page 145).

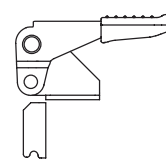
T3





T3/T3X

Tool provided with standard size tie rod.



T30/T30X

Tool supplied without tie rod. Match with tie rods of different sizes (see page 145).

Code	Description	A	B	C	D	E	F	G	H	I	L	M	N	O	Q	S	T	F _h (daN)	Gr.
AL530	160/T3	68	37	5	49.5÷58	35	25.5	22	14.3	13	26	14	10	2	4.3	22÷29	M4	160	106
AL535	320/T3	106	53	8	75÷95	44	37	25.5	20.5	19	36	22	15	3	6.5	39÷49	M6	320	331
AL540	700/T3	147	66	13	98÷122	54	48.5	36.5	27	32	52	26	23	3.5	8.5	50÷62	M8	750	722
AL542	160/T30	68	37	5		35	25.5	22	14.3	13	26	14	10	2	4.3		M4	160	97
AL544	320/T30	106	53	8		44	37	25.5	20.5	19	36	22	15	3	6.5		M6	320	294
AL546	700/T30	147	66	13		54	48.5	36.5	27	32	52	26	23	3.5	8.5		M8	750	667



Code	Description	A	B	C	D	E	F	G	H	I	L	M	N	O	Q	S	T	F _h (daN)	Gr.
AS530	160/T3X	68	37	5	49.5÷58	35	25.5	22	14.3	13	26	14	10	2	4.3	22÷29	M4	160	106
AS535	320/T3X	106	53	8	75÷95	44	37	25.5	20.5	19	36	22	15	3	6.5	39÷49	M6	320	331
AS540	700/T3X	147	66	13	98÷122	54	48.5	36.5	27	32	52	26	23	3.5	8.5	50÷62	M8	750	722
AS542	160/T30X	68	37	5		35	25.5	22	14.3	13	26	14	10	2	4.3		M4	160	97
AS544	320/T30X	106	53	8		44	37	25.5	20.5	19	36	22	15	3	6.5		M6	320	294
AS543	700/T30X	147	66	13		54	48.5	36.5	27	32	52	26	23	3.5	8.5		M8	750	667

