

PEP.FZE13-R12,4



THREADED STUD WITH BALL JOINT R12,4 WITH HEXAGON 13 MM. - COLD PRESSED

Material: Steel with resistant class 4.8.

Surface: Blue zinc plated.

Thread: Thread with 6g tolerance.

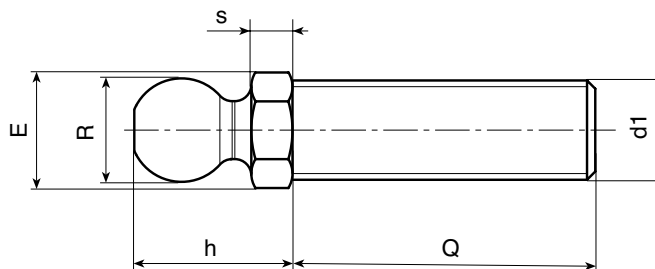
SPECIAL REQUESTS:

- It is possible to supply the inserts with different lengths or different design, on request with a minimum of 30.000 pcs.

FOOT BASE COMPATIBILITY:

These studs are compatible with the following foot bases:

- PIE.040S12,4 • PIE.050S12,4 • PIE.060S12,4 • PIE.080S12,4



Art.	E	s	h	R	d1 6g	Q	g
PEP.FZE13X5M08X45	13	5	20	12,4	M08	45	29
PEP.FZE13X5M08X70	13	5	20	12,4	M08	70	36
PEP.FZE13X5M10X45	13	5	20	12,4	M10	45	37
PEP.FZE13X5M10X70	13	5	20	12,4	M10	70	49
PEP.FZE13X5M10X100	13	5	20	12,4	M10	100	74
PEP.FZE13X5M12X45	13	5	20	12,4	M12	45	46
PEP.FZE13X5M12X70	13	5	20	12,4	M12	70	65
PEP.FZE13X5M12X100	13	5	20	12,4	M12	100	85

PEP.INE13



TURNED THREADED STUD WITH BALL JOINT R12,4 WITH HEXAGON 13 MM.

Material: Stainless steel AISI 303

Surface: Natural.

Thread: Thread with 6g tolerance.

SPECIAL REQUESTS: • It is possible to supply the inserts with different lengths or different design, on request and for quantities.

FOOT BASE COMPATIBILITY:

These studs are compatible with the following foot bases: • PIE.040S12,4 • PIE.050S12,4 • PIE.060S12,4 • PIE.080S12,4

INOX

Art.	E	s	h	R	d1 6g	Q	Q Max	g
PEP.INE13X5M08X..	13	5	20	12,4	M08	45-70	70	29-36
PEP.INE13X5M10X..	13	5	20	12,4	M10	45-70	70	37-49
PEP.INE13X5M12X..	13	5	20	12,4	M12	45-70-100	100	46-75-85

Enter the stud length choice in the two .. of the article code. Lengths by request with 100 pieces minimum quantity.