

# PEP.VZE16-R15



## TURNED THREADED STUD WITH BALL JOINT R15 WITH HEXAGON 16 MM.

**Material:** Automatic steel.

**Surface:** Blue zinc plated.

**Thread:** Thread with 6g tolerance.

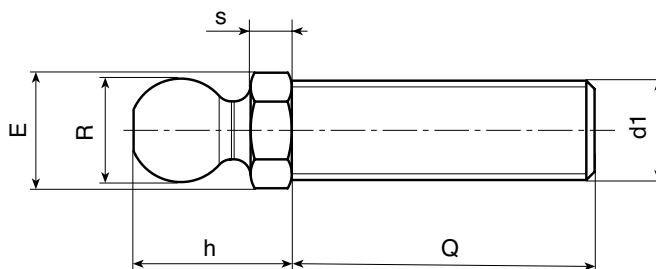
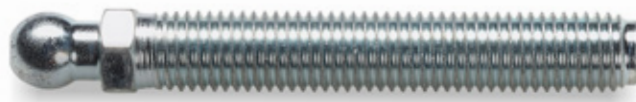
**SPECIAL REQUESTS:**

- It is possible to supply the inserts with different lengths or different design, on request and for quantities.

**FOOT BASE COMPATIBILITY:**

These studs are compatible with the following foot bases:

- PIE.060S15 • PIE.080S15 • PIE.105S15 • PIE.130S15



Art.	E	s	h	R	d1 6g	Q	g
PEP.VZE16X6M12X..	16	6	23	15	M12	50-70-90-110	63-76-91-107
PEP.VZE16X6M14X..	16	6	23	15	M14	50-70-90-110-150	75-95-116-133-167
PEP.VZE16X6M16X..	16	6	23	15	M16	50-70-90-110-130-150-170-190	91-117-143-168-194-219-247-270

Enter the stud length choice in the two .. of the article code. Lengths by request with 100 pieces minimum quantity.

# PEP.INE16-R15



## STAINLESS STEEL TURNED THREADED STUD WITH BALL JOINT R15 WITH HEXAGON 16 MM.

**Material:** Stainless Steel AISI 303.

**Surface:** Natural.

**Thread:** Thread with 6g tolerance.

**SPECIAL REQUESTS:**

- It is possible to supply the inserts with different lengths or different design, on request and for quantities.

**FOOT BASE COMPATIBILITY:**

These studs are compatible with the following foot bases:

- PIE.060S15 • PIE.080S15 • PIE.105S15 • PIE.130S15



**INOX**

Art.	E	s	h	R	d1 6g	Q	g
PEP.INE16X6M12X..	16	6	23	15	M12	50-70-90-110	63-76-91
PEP.INE16X6M14X..	16	6	23	15	M14	70-110-130	95-133-150
PEP.INE16X6M16X..	16	6	23	15	M16	50-70-90-110-130-150-170-190	91-117-143-168-194-219-247-272

Enter the stud length choice in the two .. of the article code. Lengths by request with 100 pieces minimum quantity.

Presumable presence in the stock in %   
 90% ● 40% ● 5% ●