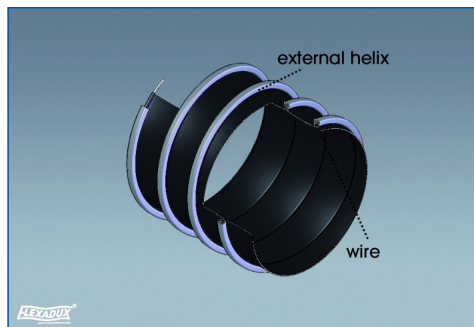




# FLEXADUX® PTFE EL CL

**Very flexible PTFE ducting,  
conductive**



## Material:

PTFE coated glass fabric, black

## Single Length:

3 to 10 meters, Special lengths available

## Temperature Resistance:

- 150° C to + 250° C

## Applications:

Suction of aggressive chemical gases and fumes especially for the paint and paper industry, pharmaceutical- and chemical industry

## Properties:

Good resistance against chemicals, weather proof, good compressibility, outer wear strip, conductive ( $R < 10^6$  Ohm), conform to TRBS 2153 and ATEX-guideline 94/9/EG

## TECHNICAL DATA

Dia. (mm)	Weight (kg/m)	Wall Thickness (mm)	Bending radius (mm)	Max. Work. Press. (bar)	Max. Vacuum (bar)
50	0,40	0,15	30	0,85	0,32
60	0,50	0,15	36	0,68	0,22
65	0,50	0,15	39	0,59	0,19
70	0,50	0,15	42	0,53	0,16
76	0,60	0,15	45	0,47	0,14
80	0,60	0,15	48	0,43	0,13
83	0,60	0,15	50	0,36	0,10
102	0,60	0,15	60	0,30	0,08
112	0,70	0,15	66	0,26	0,07
120	0,70	0,15	72	0,36	0,06
127	0,80	0,15	75	0,33	0,05
140	0,80	0,15	84	0,25	0,04
152	0,90	0,15	90	0,22	0,04
160	0,90	0,15	96	0,21	0,03
180	1,00	0,15	108	0,17	0,03
203	1,20	0,15	120	0,15	0,02
254	1,60	0,15	175	0,10	0,01
305	2,10	0,15	210	0,07	0,01
407	3,10	0,15	280	0,05	0,01
508	4,10	0,15	400	0,04	0,01

Further diameters available upon request!

Technical data are based on + 23° C.



**SCHAUENBURG RUHRKUNSTSTOFF GMBH**

Weseler Str. 35 · 45478 Mülheim-Ruhr · Germany · Tel. +49 (0) 2 08 99 91-0 · Fax +49 (0) 2 08 5 33 74 · mail@schauenburg-rk.com