

# 歐標半密式同步帶驅動側軌加強型

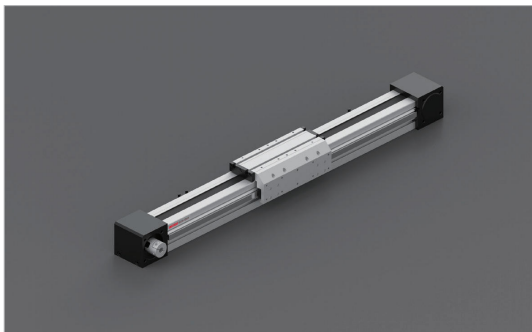
Belt Driven Linear Actuator

# HTO 80/100

## 訂購型號代碼 Code

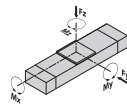
|                      |                     |                      |  |                            |  |  |  |                                  |
|----------------------|---------------------|----------------------|--|----------------------------|--|--|--|----------------------------------|
| <b>HTO80</b>         | <b>500</b>          | <b>L</b>             | <b>D01</b>                             | <b>DB</b> <small>注</small> | <b>G5</b>  | <b>M40</b>   | <b>P3</b>  | <b>A001</b>                      |
| <b>本體型號 Item NO.</b> | <b>行程 Stroke</b>    | <b>是否加長滑塊</b>        | <b>馬達方向</b>                            | <b>輔助滑塊</b>                | <b>減速比</b>   | <b>馬達廠牌、功率</b>   | <b>限位傳感器數量</b>   | <b>特注式樣</b>                      |
| HTO80                | 100-4005 增量 0.1/100 | 未標註: 標準滑塊<br>L: 加長滑塊 | D01<br>D02<br>D03<br>D04<br>D05<br>D06 | 未標註: 標準滑塊<br>DB: 輔助滑塊      | G3 1:3<br>G4 1:4<br>G5 1:5<br>G7 1:7<br>G10 1:10<br><small>未標註: 無減速比</small> | M 三菱 Mitsubishi 10 /<br>P 松下 Panasonic 20 200W<br>Y 安川 Yaskawa 40 400W<br>D 台達 Delta 75 750W<br>1K 1000W | P1: 1片 1PC<br>P2: 2片 2PCS<br>P3: 3片 3PCS<br><small>No Mark/No Sensor</small> | <small>Special Order No.</small> |

注: 輔助滑塊選項相關參數參見樣本P122.



### 最大動態力和力矩

Max Permissible Forces And Torques



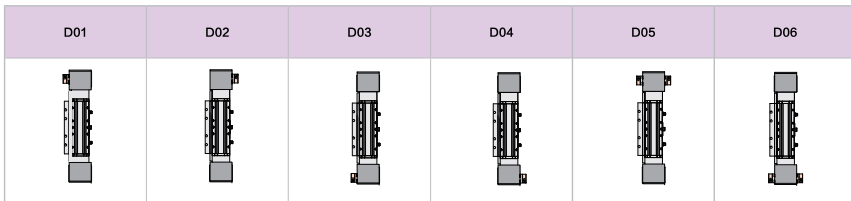
| 規格 Type      | 80   | 80-L  | 100  | 100-L |
|--------------|------|-------|------|-------|
| ■ F(y) (N)   | 6980 | 10470 | 9702 | 14554 |
| ■ F(z) (N)   | 6980 | 10470 | 9702 | 14554 |
| ■ M(x) (N·m) | 118  | 178   | 216  | 374   |
| ■ M(y) (N·m) | 333  | 590   | 765  | 1080  |
| ■ M(z) (N·m) | 333  | 590   | 765  | 1080  |

除了滿足最大負載和力矩外，還必須滿足以下公式：

All forces and torques relate to the following:

$$\frac{F_y}{F_y \max} + \frac{F_z}{F_z \max} + \frac{M_x}{M_x \max} + \frac{M_y}{M_y \max} + \frac{M_z}{M_z \max} \leq 1$$

### 馬達安裝方向 Motor Mounting Position Version



### 基本規格 Basic Specification

| HTO  |  | 80                     | 80-L                  | 100                   | 100-L                 |       |
|--|--|------------------------|-----------------------|-----------------------|-----------------------|-------|
| <b>技術參數</b><br>Technical Parameters                          | 位置重複精度 Repetitive Accuracy (mm)          | ±0.05                  |                       |                       |                       |       |
|  | 皮帶總導程 Pulley Lead (mm)                   | 176                    | 176                   | 224                   | 224                   |       |
|  | 皮帶型號 Belt Type                           | 8M-30                  | 8M-30                 | 8M-50                 | 8M-50                 |       |
|  | 最高速度 Maximum Speed (mm/s)                | 5000                   | 5000                  | 5000                  | 5000                  |       |
|  | 最大可搬重量<br>Maximum Payload                | 水平使用 Horizontal (kg)   | 100                   | 150                   | 165                   | 247.5 |
|  |  | 垂直使用 Vertical (kg)     | 62                    | 93                    | 105                   | 157.5 |
| <b>基本規格</b><br>Basic Specification                           | 最大空載扭矩 Max. No-load Driving Torque (N·m) | 0.9                    | 0.9                   | 1.4                   | 1.4                   |       |
|  | 最大扭矩 Max. Driving Torque (N·m)           | 49.8                   | 49.8                  | 105.7                 | 105.7                 |       |
|  | 標準行程 Stroke (mm)                         | 100-4000mm / 100 pitch |                       |                       |                       |       |
|  | AC伺服馬達容量 AC Servo Motor Output (W)       | 200/400/750            | 200/400/750           | 750/1000              | 750/1000              |       |
|  | 齒圍性直線滑軌 Linear Guide                     | 20# × 1PC + 15# × 1PC  | 20# × 1PC + 15# × 1PC | 25# × 1PC + 20# × 1PC | 25# × 1PC + 20# × 1PC |       |
| 主軌截面積最大外形<br>Max Outline of Main Engine's Cross Section (mm) | 106 × 122                                | 106 × 122              | 130 × 151             | 130 × 151             |                       |       |
| 原點感應器 Home Sensor  | EE-SX672(NPN)                            |                        |                       |                       |                       |       |

#注1: 測定條件為無力矩的理論數據，根據力矩和加速度數據會相應改變，具體請參考選型軟件。

#note1: Data changes relevantly according to different torque and accelerated speed. Please refer to the LIMON calculate software.



選型軟件: LimonCalculate

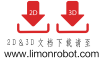
[www.limonrobot.com](http://www.limonrobot.com)

6

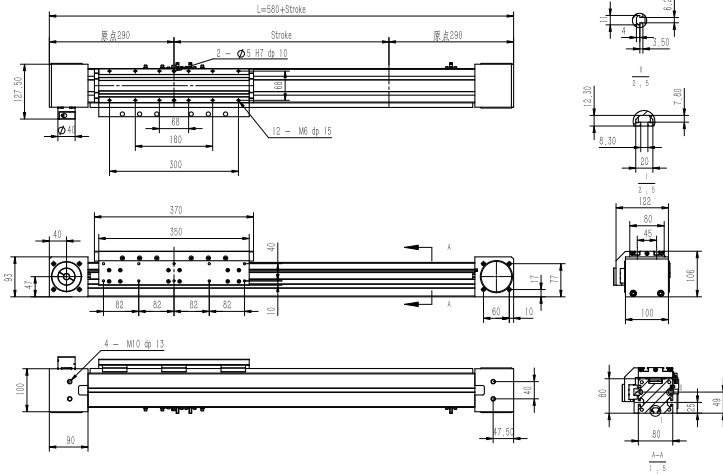
HTO Series  
HTO Series  
ITC Series  
ITC Series  
HTC Series  
ITZ Series  
ITZ Series  
TSC Series  
TSC Series  
TWG Series  
TWG Series  
SSG Series  
SSG Series  
SWG Series  
SWG Series  
Y50 Series  
Y50 Series  
YSC Series  
YSC Series  
YTO Series  
YTO Series  
YTC Series  
YTC Series  
Mikulus system

# 歐標半密式同步帶驅動側軌加強型 HTO 80/100

Belt Driven Linear Actuator

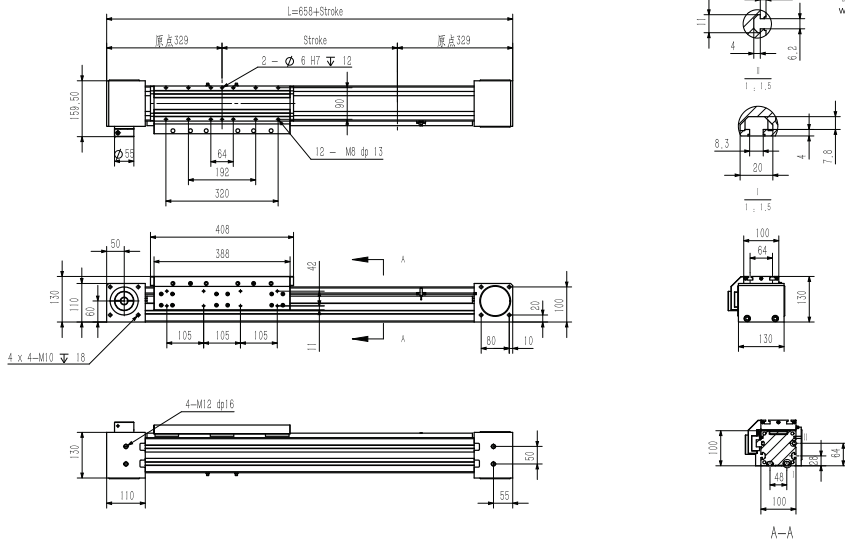
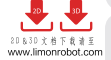


## HTO 80-L



| 行程 Stroke (mm) | 100  | 200  | 300  | 400  | 500  | 600  | 700  | 800  | 900  | 1000 | 1100 | 1200 | 1300 | 1400 | 1500 | 1600 | 1700 | 1800 | 1900 | 2000 |
|----------------|------|------|------|------|------|------|------|------|------|------|------|------|------|------|------|------|------|------|------|------|
| L              | 680  | 780  | 880  | 980  | 1080 | 1180 | 1280 | 1380 | 1480 | 1580 | 1680 | 1780 | 1880 | 1980 | 2080 | 2180 | 2280 | 2380 | 2480 | 2580 |
| 重量 Weight (kg) | 11.2 | 12.2 | 13.2 | 14.2 | 15.2 | 16.2 | 17.2 | 18.2 | 19.2 | 20.2 | 21.2 | 22.2 | 23.2 | 24.2 | 25.2 | 26.2 | 27.2 | 28.2 | 29.2 | 30.2 |
| 行程 Stroke (mm) | 2100 | 2200 | 2300 | 2400 | 2500 | 2600 | 2700 | 2800 | 2900 | 3000 | 3100 | 3200 | 3300 | 3400 | 3500 | 3600 | 3700 | 3800 | 3900 | 4000 |
| L              | 2680 | 2780 | 2880 | 2980 | 3080 | 3180 | 3280 | 3380 | 3480 | 3580 | 3680 | 3780 | 3880 | 3980 | 4080 | 4180 | 4280 | 4380 | 4480 | 4580 |
| 重量 Weight (kg) | 31.2 | 32.2 | 33.2 | 34.2 | 35.2 | 36.2 | 37.2 | 38.2 | 39.2 | 40.2 | 41.2 | 42.2 | 43.2 | 44.2 | 45.2 | 46.2 | 47.2 | 48.2 | 49.2 |      |

## HTO 100-L



| 行程 Stroke (mm) | 100  | 200  | 300  | 400  | 500  | 600  | 700  | 800  | 900  | 1000 | 1100 | 1200 | 1300 | 1400 | 1500 | 1600 | 1700 | 1800 | 1900 | 2000 |
|----------------|------|------|------|------|------|------|------|------|------|------|------|------|------|------|------|------|------|------|------|------|
| L              | 758  | 858  | 958  | 1058 | 1158 | 1258 | 1358 | 1458 | 1558 | 1658 | 1758 | 1858 | 1958 | 2058 | 2158 | 2258 | 2358 | 2458 | 2558 | 2658 |
| 重量 Weight (kg) | 17.6 | 18.4 | 19.2 | 20   | 20.8 | 21.6 | 22.4 | 23.2 | 24   | 24.8 | 25.6 | 26.2 | 27.2 | 28   | 28.8 | 29.6 | 30.4 | 31.2 | 32   | 32.8 |
| 行程 Stroke (mm) | 2100 | 2200 | 2300 | 2400 | 2500 | 2600 | 2700 | 2800 | 2900 | 3000 | 3100 | 3200 | 3300 | 3400 | 3500 | 3600 | 3700 | 3800 | 3900 | 4000 |
| L              | 2758 | 2858 | 2958 | 3058 | 3158 | 3258 | 3358 | 3458 | 3558 | 3658 | 3758 | 3858 | 3958 | 4058 | 4158 | 4258 | 4358 | 4458 | 4558 | 4658 |
| 重量 Weight (kg) | 33.6 | 34.4 | 35.2 | 36   | 36.8 | 37.6 | 38.4 | 39.2 | 40   | 40.8 | 41.6 | 42.4 | 43.2 | 44   | 44.8 | 45.6 | 46.4 | 47.2 | 48   | 48.8 |

选型软件: LimonCalculate

DOWNLOAD [www.limonrobot.com](http://www.limonrobot.com)



ITO Series

HTO Series

ITC Series

HTC Series

ITZ Series

TSG Series

TWG Series

SSG Series

SWG Series

YSO Series

YSC Series

YTO Series

YTC Series

Milvus system